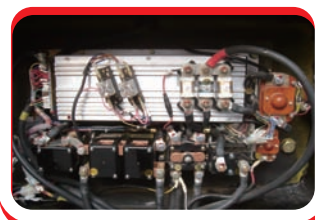


### Separated Excited motor(\*DC\*)

Separately Excited Motor (SEM) is a new type of DC motor where the field motor coil and armature receive power independently. This greatly improves motor performance providing increased acceleration and top speeds and reduced brush wear. One of the key benefits of Separately Excited Motor (SEM) is that it enables a significant amount of vehicular kinetic energy which is normally wasted during mechanical braking to be fed back to the battery, hence enhancing battery life. This regenerative braking is activated whenever accelerator pedal is released, The programmable controller represents the next level in drive system and is designed to provide smooth, silent, efficient and cost effective speed control. Output voltage at armature and current in field winding of the motor are controlled by varying switching frequency of MOSFETS. An infinitely variable speed can be obtained by throttle potentiometer.



### MOSFET Electric Controller (\*DC\*)

We applied advanced GE U.S. MOSFET electronic controller on our CPD series electric forklift truck, It has very small voltage loss and higher efficiency; which consider stepless stable movement, speed and safe. Economical operation due to high working performance.



### Italian S.M.E Full Motor (\*AC\*)

The incorporation of S.M.E developed components, including finely engineered helical gears, assures low noise, high quality and a longer service life. The front driving tyres with double motor which are two high performance, low noise, 3-way AC motors. Driving system is with strong traction and driving edit function. Flexible driving, available to stop on the ramp when full load.

The advantages is with strong traction and acceleration from zero to Max. speed with the control of aptitude moment and speed. It with high speed when straight going and transfer to lower speed automatic when turning.

### Italian S.M.E Electric Controller (\*AC\*)

The management of aptitude power, in any conditions of operation, guarantee the best electric supply status, keep the performance of forklift and accumulator balanced. this controller still provide 3 modes of power management:

- 1) Economic mode**  
Qualified the performance of accumulator control the limited performance of forklift.
- 2) Standard mode**  
Balanced the performance of accumulator and forklift.
- 3) Qualified mode**  
Qualified the performance of forklift control the limited performance of accumulator.



### Ergonomic and comfortable seat

Concept of using ergonomic seat design, more comfortable and reliable. Optional full-suspension seat provides world-class comfort, which is adjustable for weight, leg room and back angle.



### Spacious and comfortable compartment

Suspended type brake equipment and dual pedal accelerator offer easy and safe engagement.



### Smart design to functional handle

A proper mechanism to ensure a quick & effortless operation.

### Safe and comfortable device

The operator presence system provides additional protection for the operator by cutting power to the drive motors and locking out the hydraulic operation when the operator press the emergency switch.



### Standard Equipment

- MOSFET controller
- Standard fork
- Standard seat
- Cargo protecting shelf
- Backup light
- Backup buzzer
- Backup mirror
- Lighting switches
- Lighting shield
- Electronic horn
- Double piece multiple-way valve
- Direction switches
- Backup light set
- Durable tire with pattern
- Hour meter
- Idle shift indicator
- High visibility mast
- Guy cable parking brake
- Lift-leaning joy stick
- Lifting speed limiting valve
- Towing pin
- Front spotlight
- Lean and adjustable steeling wheel
- Tilt oilway lockvalve
- Hydraulic turning
- Top ventilation device
- Joy stick
- Hand brake
- Water temperature meter
- Tool kits
- Top-front light
- Rubber footplate mat
- Accumulator pile
- LCD cluster gauge
- Hydraulic oil-return filtration core
- Hydraulic oil-collection filtration core
- Hydraulic oil-collection staff guage
- Key switch
- Detent
- Turning light
- Emergency disconnect switch
- Rubber floor mat
- Locked spring gas
- Adjustable steering controlled
- Toolbox and file folder

### Optional Attachments

- Wide view 2-stage full free masts
- Wide view 3-stage full free masts
- Wide carriage
- Long forks
- Fork extension sleeves
- Side shift
- Hinged forks, bucket
- Load grad
- Paper roll clamp
- Carton clamp
- Rotating forks
- Multiple drum clamp
- Sleeve-in drum gripper
- Load stabilizer(with side shift)
- Load push pull
- Baked block clamp
- Crane arm
- Ram



### Optional Equipment and Accessories

- Front dual wheels and fender extension
- Solid tires
- All weather steel cabin
- Heater for steel cabin
- Color tire(white,green)
- Power brake
- Smoke reduction/spark arrester muffler
- Fire extinguisher
- Rear working light
- Custom colorpaint
- Auxiliary piping
- Auxiliary hydraulic valve modules
- Non-slip differential
- Overhead exhaust
- Headguard canvas
- 3-Fulcrums



### Fork Standard

Standard Equipment L x W x T mm	Width W mm	Thickness T mm	Length L mm										Suitable Forklift
920×100×35	100	35	770	*920	1070	1220	1370	1520	1670	1820	1970	1.0~1.5T	
1070×125×40	125	40	770	920	*1070	1220	1370	1520	1670	1820	1970	2.0T	
1150×125×45	125	45	770	920	*1070	1220	1370	1520	1670	1820	1970	2.5~3.0T	

Specifications and design are subject to change without prior notice. Machines shown may include optional equipment.



### SINOLIFT MATERIAL HANDLING EQUIPMENT CORP.

ADD: 2477 Dachuan Road, Nanhui Industry Park, Shanghai, China 201399

TEL: +86 21 68014500 / +86 21 58003681

FAX: +86 21 68014262 / +86 21 68038190

EMAIL: [info@sinolift.com](mailto:info@sinolift.com)

WEB: [www.sinolift.com](http://www.sinolift.com) [www.sinoliftforklift.com](http://www.sinoliftforklift.com)







1-3T Electric Balance Weight Forklift Truck

- Arc streamline body,beautiful,wide visual view,low center of gravity,safety and high reliability.
- DC series with electric control system produced by American GE company, characterized by stepless speed adjustment, safety, reliability,electricity saving,sensitive,small heating and high efficiency,having function of brake regeneration,heat protection, too low battery capacity protection and instrument automatic testing trouble.
- Comparing with DC motors, the AC motors provide operator with more smooth, sensitive and quicker response of operation. No more maintenance for AC motors, which can extend the service life of the motors.
- Electric control system is fitted inside the balance weight,good heat conduction efficiency,portable opening of back cover,easy to maintenance and service.
- Fully imported dua pedal accelerator,small and flexible steering wheel,big capacity battery and rubber handle.
- The lifting motor is arranged in the side of the frame,easy to maintenance and sevice.
- Adjustable driver's parts can meet requirement of the human body engineering. low noise,no pollution and environmental protection.

Features:  
Flexibility, Quiet,Easy to drive, Efficiently

- Smooth vehicle control.
- Multi-valve control system and energy-efficient hydraulic system.
- Regenerative braking: a)enhances life of brake shoe liners. b) enhances period between consecutive battery charges.
- Easy trouble shooting with built-in diagnostics.
- Programmable truck characteristics to suit operating requirements.
- Lesser maintenance due to the qualited components.



Ergonomic Application

We use scientific ergonomic method to design those forklift truck, The operation space has been efficiently enlarged. The rough feeling of the driver has been reduced to the lowest extends.



High Capacity Battery

Because you open and close the battery cover for daily checkup, access of battery cover is improved by using gas-spring with lock function. Quick and easy battery change due to tiltopen cab module.



Traverse Cylinder

It has minibus turning radius, safe and reliable, and easy to install, with a service lift, It's not necessary to adjust the right and left steering angle,It uses tapered roller bearings to minimize play,extend durability,and reduce friction,Grease fittings are easily accessible for quick maintenance. In our new AC system electric forklift, we use the turning angle sensor makes the truck travel smoothly and safely when turning.

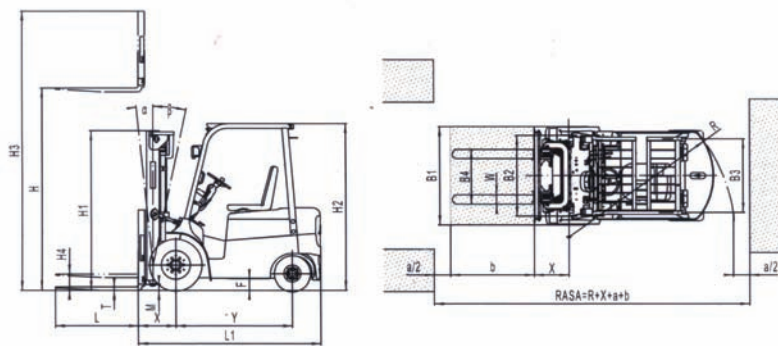
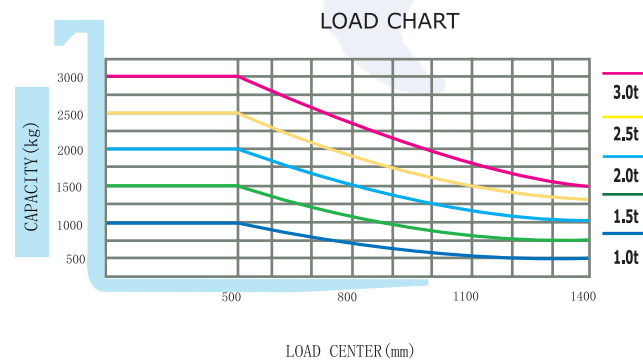


Import multifunction LCD Instrument

The new multi-functional LCD dash board provides more information for operator, this LCD instrument is also waterproof and vibration-proof.

CPD/CPD-J Series 1.0T-3.0T Battery Forklift Specifications

		SINOLIFT												
		CPD10	CPD15	CPD20	CPD25	CPD30	CPD15J	CPD20J	CPD25J	CPD30J				
General	Manufacturer	SINOLIFT												
	Model	CPD10	CPD15	CPD20	CPD25	CPD30	CPD15J	CPD20J	CPD25J	CPD30J				
	Power type	Battery	Battery	Battery	Battery	Battery	Battery							
	Rated capacity	kg	1000	1500	2000	2500	3000	1500	2000	2500	3000			
	Load center	mm	500	500	500	500	500	500	500	500	500			
	Lift height	H	mm	3000	3000	3000	3000	3000	3000	3000	3000			
	Free lift	E	mm	162	162	140	140	145	162	140	140			
	Fork size	NxUxL	mm	920x100x40	920x100x40	1070x120x40	1070x120x45	1070x125x45	920x120x40	1070x120x40	1070x120x45	1070x125x45		
	Fork outside spread (Min./Max.)	mm	200/968	200/968	240/1040	240/1040	250/1100	200/968	240/1040	240/1040	250/1100			
	Mast tilt angle (forward/backward)	α / β	deg	6/12	6/12	6/12	6/12	6/10	6/12	6/10	6/10			
Dimensions	Front overhang	A2	mm	429	429	479	484	454	429	459	464			
	Overall dimensions	Length to face of fork	A1	mm	2056	2056	2349	2381	2481	2056	2349	2381		
		Overall width	B1	mm	1090	1090	1152	1152	1265	1090	1265	1265		
		Mast lowered height	H1	mm	1995	1995	2060	2060	2040	1995	2040	2040		
		Mast extended height	H3	mm	4042	4042	4040	4040	4273	4042	4240	4240		
	Overhead guard height	H2	mm	2162	2162	2159	2159	2125	2125	2125	2125			
	Turning radius	R	mm	1820	1820	2050	2100	2230	1820	2050	2100			
	Min. right angle aisle width	X	mm	1810	1810	2110	2150	2280	1810	2110	2150			
	Min. right angle stacking aisle width	RASA	mm	3370	3370	3715	3755	3915	3370	3715	3755			
	Travel speed (laden / unladen)	kmy/h	13.5/11.5	13/11	12.5/11	12.5/10.5	13/12	15/13	14/12	14/12	14.5/12			
Lifting speed (laden / unladen)	mm/sec	400/300	390/285	400/260	390/250	380/250	400/300	420/310	420/300	420/280				
Max. pull force (full load)	KN	6	6.5	8	8	10	6.5	8	8	10				
Services weight	kg	2900	3120	4160	4360	4850	3120	4160	4360	4850				
Max. gradeability	%	15	15	10	10	10	15	10	10	10				
Wheel & Tire	Tyre	Front	6.50-10-10PR	6.50-10-10PR	7.00-12-12PR	7.00-12-12PR	23x9-10	6.50-10-10PR	23x9-10-18PR	23x9-10-18PR	23x9-10			
		Rear	5.00-8-8PR	5.00-8-8PR	18x7-8-14PR	18x7-8-14PR	18x7-8	5.00-8-8PR	18x7-8-14PR	18x7-8-14PR	18x7-8			
	Tread	Ront B2	mm	890	890	960	960	1040	890	1040	1040			
		Rear B3	mm	920	920	950	950	980	920	950	980			
Wheelbase	A3	mm	1250	1250	1500	1500	1630	1250	1500	1500				
Ground clearance (no load / full load)	Mast M	mm	110/95	110/95	120/100	120/100	105/85	110/95	105/85	105/85				
	Fram F	mm	105/95	105/95	120/100	120/100	140/120	105/95	140/120	140/120				
Power & Control	Battery	Model	D-440(D-400/D-480 option)		D-630(708700 option)		D-500(D-600 option)		D-440B		D-630(708700 option)		D-500(D-600 option)	
		Voltage	48/440 (400/480)		48/630 (700)		80/500(600)		48/440		48/630 (700)		80/500(600)	
	Battery Weight	760(820)		1180(1340)		1390(1520)		760		1180(1340)		1390(1520)		
Motor	Drive motor	Model	XQ-5-3A1		XQ-5-7A3		XQ-10-1-T		MT708B		MT754B		MT776B	
		Rated power	5.3/1700(an hour)		7.0/1400(an hour)		10.2/1500		8/1600		8/1300		8/1300	
	Lifting Motor	Model	XQD-8.2-1		XQD-8.6-3D		XQD-10-3C		MT719B		MT325B		MT800B	
Controller	Rated power	8.2/1600(fifteen minutes)		8.6/1600(fifteen minutes)		10/2000		10/2450		15/2200		15/2200		
Remark:														
1. Special lifting height available.														
2. Attachment available.														
3. The specification in the table are for standard models only, All specifications indicated are subject to a variation of ± 15%, and may be further affected by operation conditions, optional fittings and accessories. Critical specification should be confirmed before placement of order. Specification are subject to change without notice, for further information ,please contact us.														



Notice:  
Vertical axle stands for load capacity while horizontal axle stands for load center,load center is the distance counted from the front of the fork,The base point of the standard load is the center point of the cubic with the same 1000mm dimension in length,width and height,The load capacity should be down,if mask fits forward,using non-standard forks or loading goods with extra width,Please the different load capacity between different load centers according to load chart.

Mast Specifications of CPD/CPD-J Series 1-3T Battery Forklift

Mast model	Lifting Height	Lifting Capacity					Overall Height of Mast				Free lift			Mast Tilt Angle		
		4-Fulcrum forklift					1-1.5t		2-2.5t		3t		1-1.5T	2-2.5T	3t	
		Rting Capacity at 500mm Load center					Lowered	Extended	Lowered	Extended	Lowered	Extended	4-Fulcrum Forklift	4-Fulcrum	4-Fulcrum	
		1t	1.5t	2.0t	2.5t	3.0t	With Backrest		Without Backrest		Without Backrest		(α/β)	(α/β)	(α/β)	
	Mm	Kg	Kg	Kg	Kg	Kg	Mm	Mm	Mm	Mm	Mm	Mm	Mm	Mm	Mm	
2M200	2000	1000	1500	2000	2500	3000	1495	3032	1522	3030	1590	3257	162	140	145	
2M250	2500	1000	1500	2000	2500	3000	1745	3532	1772	3530	1820	3635	162	140	145	
2M270	2700	1000	1500	2000	2500	3000	1845	3732	1872	3730	1920	3835	162	140	145	
2M300	3000	1000	1500	2000	2500	3000	1995	4042	2060	4040	2040	4273	162	140	145	
2M330	3300	1000	1500	2000	2500	3000	2145	4342	2210	4340	2190	4573	162	140	145	
2M350	3500	1000	1500	2000	2500	3000	2245	4542	2310	4540	2290	4773	162	140	145	
2M370	3700	1000	1500	2000	2500	3000	2345	4732	2372	4730	2445	4735	162	140	145	
2M400	4000	*1000 *1500 *2000 *2500 *2900					2545	5042	2610	5040	2590	5273	162	140	145	
		*950 *1400 *1800 *2300 *2850					2670	5282	2697	5280	2745	5435	162	140	145	
2M425	4250	*1000 *1500 *2000 *2500 *2900					2670	5282	2697	5280	2745	5435	162	140	145	
		*950 *1400 *1800 *2300 *2850					2795	5532	2860	5540	2840	5773	162	140	145	
2M450	4500	*1000 *1500 *2000 *2500 *2900					2795	5532	2860	5540	2840	5773	162	140	145	
		*900 *1400 *1800 *2300 *2800					2920	5782	2947	5780	2445	4735	162	140	145	
2M475	4750	*1000 *1500 *2000 *2500 *2900					2920	5782	2947	5780	2445	4735	162	140	145	
		*800 *1200 *1700 *2100 *2500					3045	6032	3072	6030	2620	5135	162	140	145	
2M500	5000	*1000 *1500 *2000 *2500 *2900					3045	6032	3072	6030	2620	5135	162	140	145	
		*750 *1150 *1600 *2000 *2300					3345	6532	3372	6530	2745	5435	162	140	145	
2M550	5500	*1000 *1500 *2000 *2500 *2900					3345	6532	3372	6530	2745	5435	162	140	145	
		*600 *800 *1000 *1200 *1300					2795	5435	3622	7030	2870	5635	162	140	145	

2-Stage Wide-View Full Free Mast

Mast model	Lifting Height	Lifting Capacity					Overall Height of Mast				Free lift (#)			Mast Tilt Angle		
		4-Fulcrum forklift					1-1.5t		2-2.5t		3t		1-1.5T	2-2.5T	3t	
		Rting Capacity at 500mm Load center					Lowered	Extended	Lowered	Extended	Lowered	Extended	4-Fulcrum Forklift	4-Fulcrum	4-Fulcrum	
		1t	1.5t	2.0t	2.5t	3.0t	With Backrest		Without Backrest		Without Backrest		(α/β)	(α/β)	(α/β)	
	Mm	Kg	Kg	Kg	Kg	Kg	Mm	Mm	Mm	Mm	Mm	Mm	Mm	Mm	Mm	
2FFM200	2000	1000	1500	2000	2500	3000	1496	3040	1560	3024	1570	3241	981	1015	915	
2FFM250	2500	1000	1500	2000	2500	3000	1746	3540	1810	3524	1820	3741	1231	1265	1165	
2FFM270	2700	1000	1500	2000	2500	3000	1846	3740	1910	3724	1920	3941	1331	1365	1265	
2FFM300	3000	1000	1500	2000	2500	3000	1995	4042	2060	4040	2040	4273	1475	1417	1187	
2FFM330	3300	1000	1500	2000	2500	3000	2145	4342	2210	4340	2190	4573	1625	1567	1665	
2FFM350	3500	1000	1500	2000	2500	3000	2245	4542	2310	4540	2290	4773	1725	1667	1665	
2FFM370	3700	1000	1500	2000	2500	3000	2346	4740	2410	4724	2420	4941	1831	1865	1765	
2FFM400	4000	*1000 *1500 *2000 *2500 *3000					2545	5042	2610	5040	2590	5273	2025	1967	1965	
		*900 *1300 *1800 *2000 *2750					2671	5290	2735	5274	2745	5491	2156	2190	2090	
2FFM425	4250	*1000 *1500 *2000 *2500 *3000					2671	5290	2735	5274	2745	5491	2156	2190	2090	
		*950 *1400 *1900 *2400 *2900					2796	5540	2860	5540	2840	5773	2281	2217	2215	
2FFM450	4500															